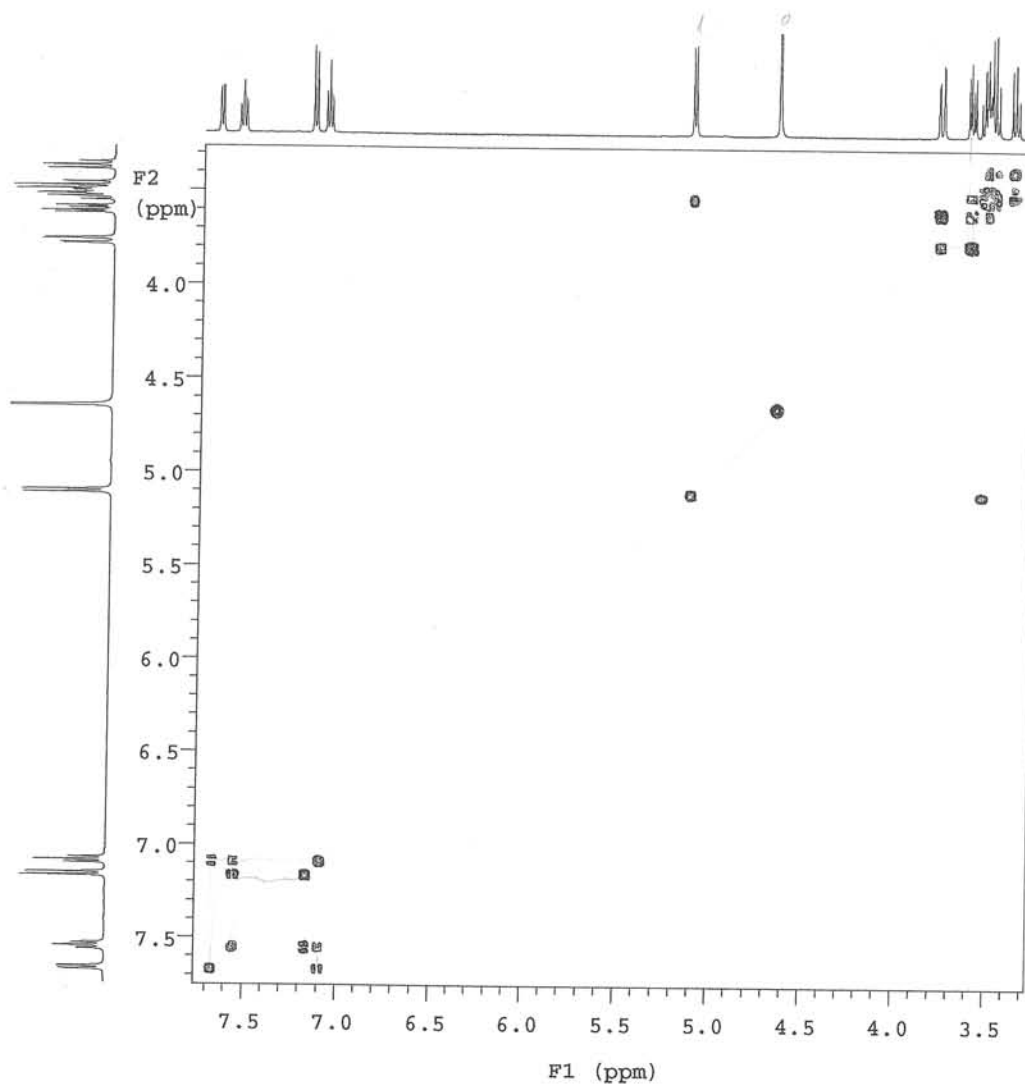
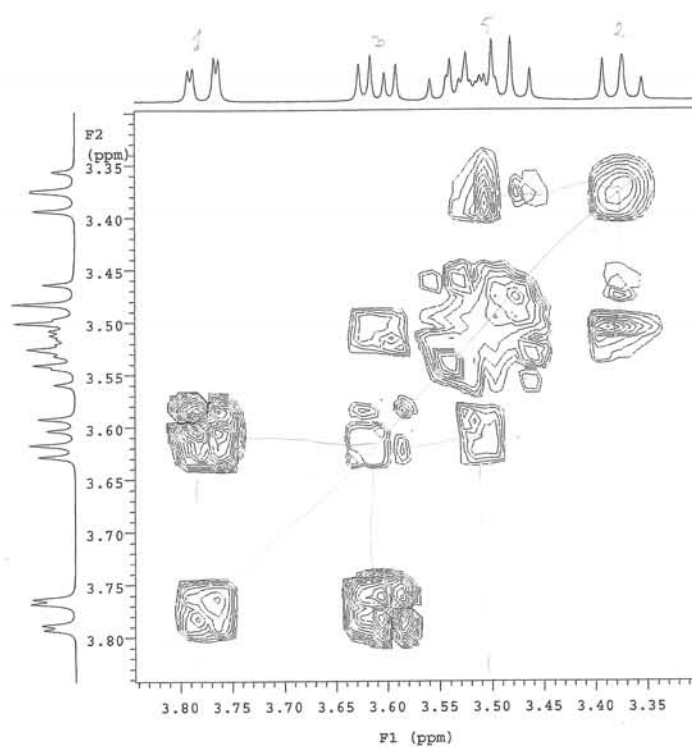


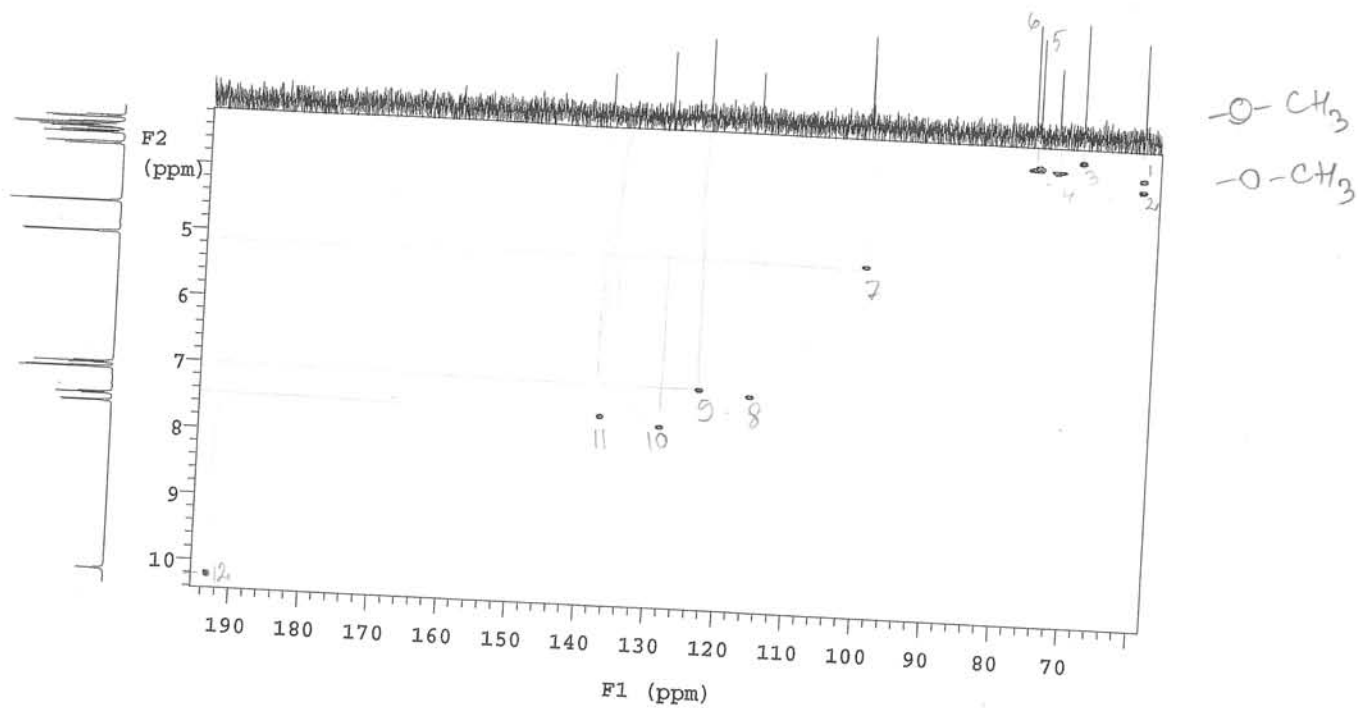
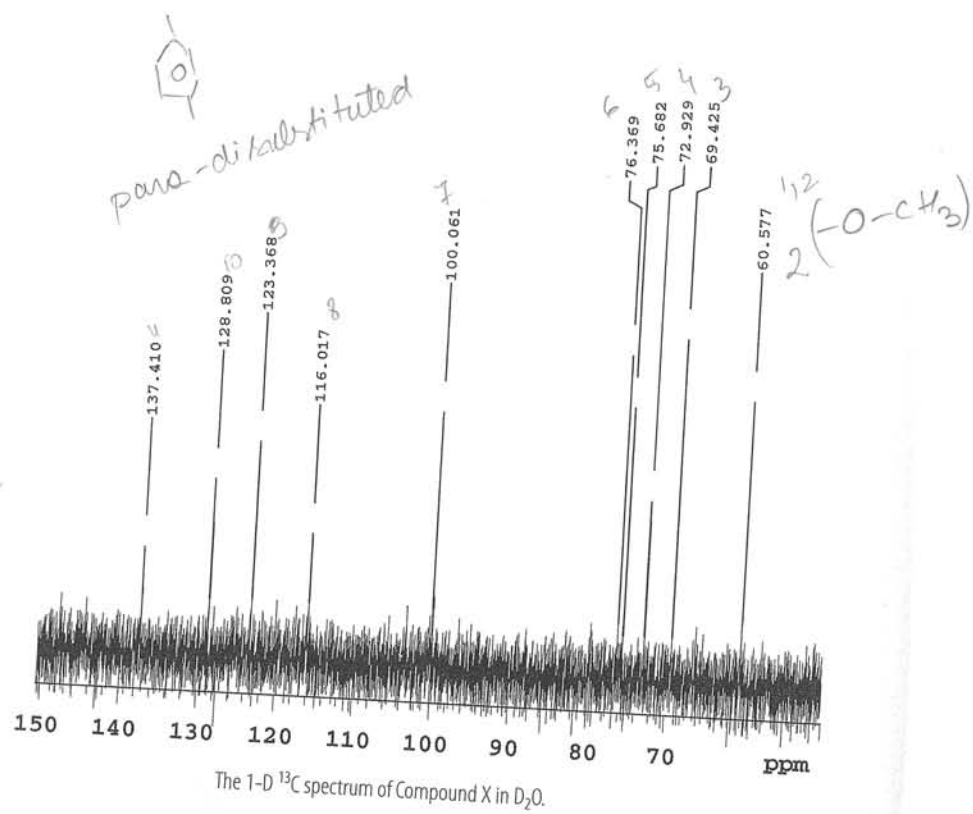
The $1\text{-D } ^1\text{H}$ spectrum of Compound X in D_2O . (a) The entire ^1H spectrum; (b) the aromatic ^1H region; (c) a portion of the aliphatic ^1H region.



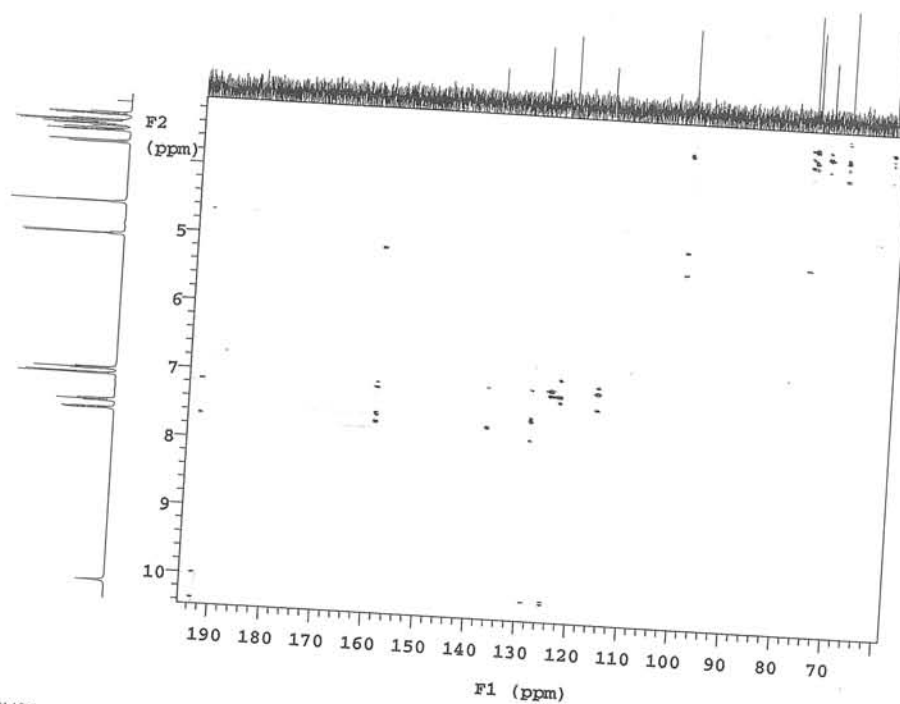
The 2-D ^1H - ^1H gCOSY spectrum of Compound X in D_2O .



An expansion of the 2-D ^1H - ^1H gCOSY spectrum of Compound X in D_2O .



The 2-D ¹H-¹³C HMQC spectrum of Compound X in D₂O.



The 2-D ^1H - ^{13}C HMBC spectrum of Compound X in D_2O .